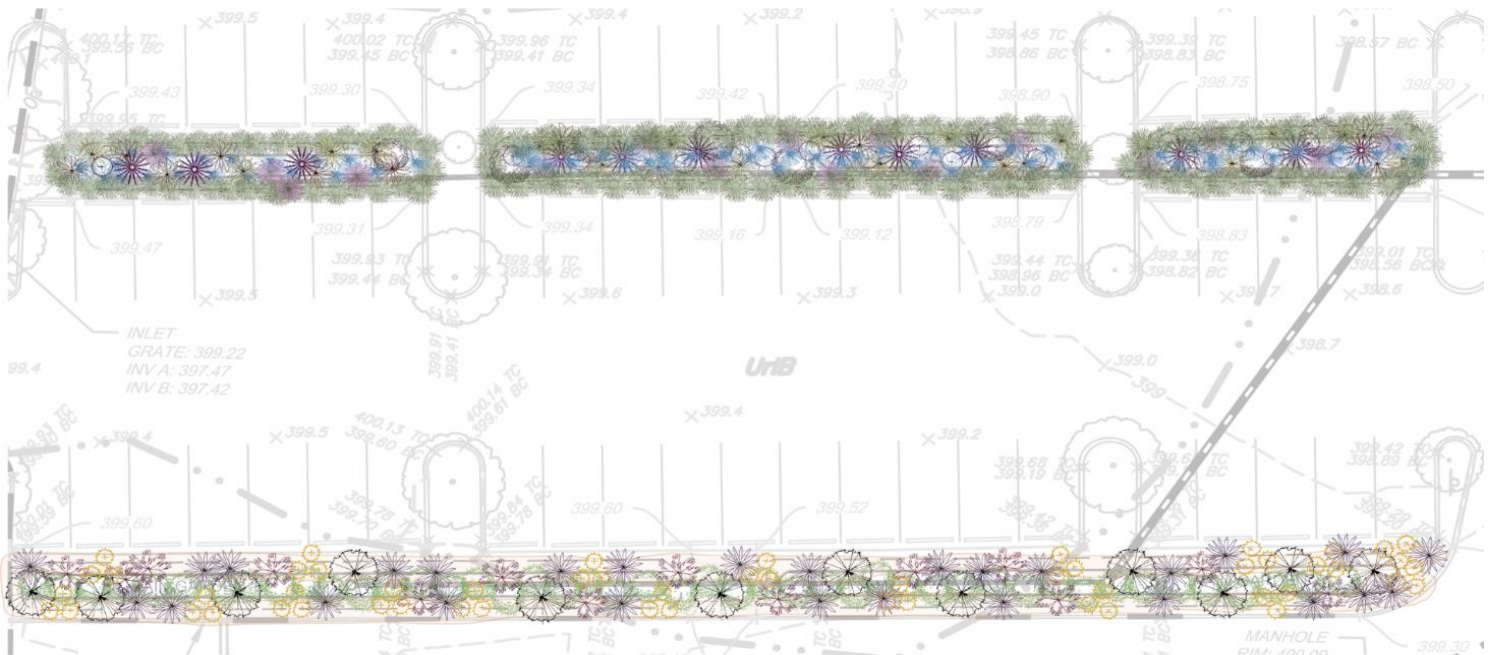
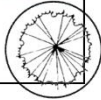


1. Central median beds densely planted with 2-3ft growth to prevent foot traffic and provide durable growth to withstand footfall.
2. Limiting central median bed plant selections to herbaceous material only will allow for easy single mow, possibly bi-annual mow, for only maintenance need.
3. Proposal for Street edge bed is a wildlife hedgerow with flowering and fruiting interest and robust native groundcover. Low stature shrub species and nativars have been selected to allow for both dense growth with meaningful refuge and nesting space for wildlife and clear sightlines into the park to address public safety concerns. Bed will have a core *Ilex glabra* hedge and adjunct *Clethra alnifolia* and *Rosa virginiana*.
4. Robust native groundcover planting will fill street edge bed space entirely to suppress weeds and provide additional blooming interest and forage.
5. Shrub planting at high density to encourage wildlife use as thicket habitat and to prevent foot traffic.





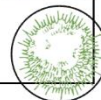
Clethra alnifolia



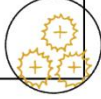
Rosa virginiana



Ilex glabra



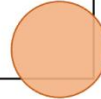
Rudbeckia fulgida



Symphyotrichum novae-angliae 'Purple Dome'



Packera aurea var. gracillis ground cover



Plugged native ground cover



Amsonia
tabernaemontana



Vernonia noveboracensis



Eragrostis
spectabilis/Muhlenbergia
capillaris



Eutrochium
maculatum



Ratibida pinnata



Monarda
fistulosa



Vernonia glauca



Rudbeckia triloba



Plugged native
ground cover

Greenfield Park

	Size	Units	Plants	Unit Cost	Total Cost
SHRUBS					
Clethra alnifolia	3-5g	40	40	\$ 40	\$ 1,600
Rosa virginiana	3g	30	30	\$ 40	\$ 1,200
Ilex glabra	3g	65	65	\$ 40	\$ 2,600
HERBACEOUS					
Vernonia noveboracensis	PL50	3	150	\$ 125	\$ 375
Vernonia glauca	PL50	3	150	\$ 125	\$ 375
Monarda fistulosa	PL50	6	300	\$ 125	\$ 750
Eragrostis capillaris	PL50	15	750	\$ 125	\$ 1,875
Rudbeckia triloba	PL50	12	600	\$ 125	\$ 1,500
Eutrochium maculatum	PL50	2	100	\$ 125	\$ 250
Ratibida pinnata	PL50	2	100	\$ 125	\$ 250
Amsonia tabernaemontana	1g	250	250	\$ 13	\$ 3,250
Packera aurea var. gracillis	PL50	18	900	\$ 125	\$ 2,250
Rudbeckia fulgida var. deamii	PL50	3	150	\$ 125	\$ 375
Symphotrichum novae-angliae	PL50	3	150	\$ 125	\$ 375
			3735		\$ 17,025